

## No Fence Districts

### **What is a no-fence district?**

In a no-fence district, Arizona's open range laws don't apply. That means that it's the livestock owner's responsibility to keep livestock off of property, rather than the property owner's responsibility.

### **How is a no-fence district established?**

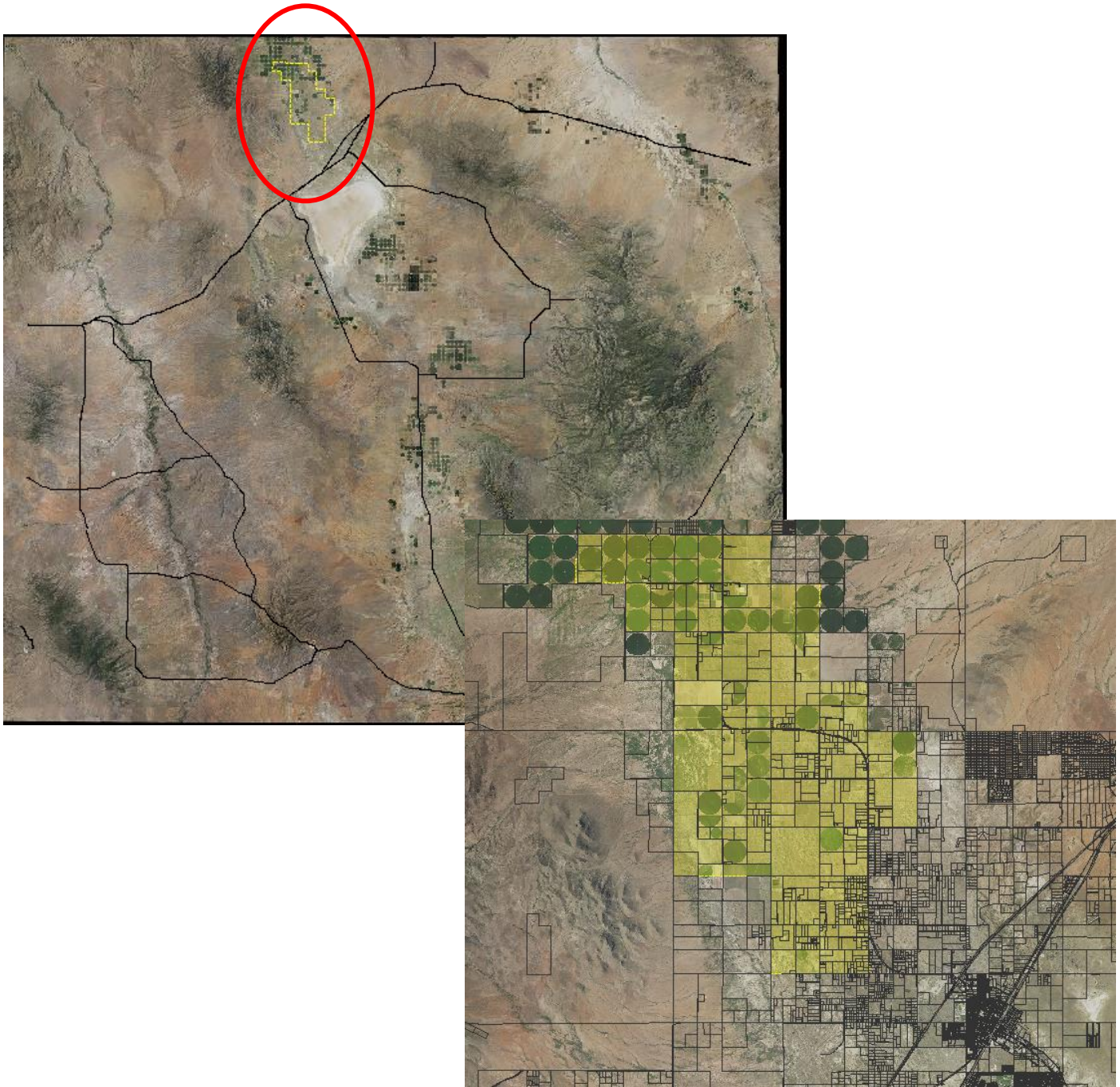
No-fence districts are established by the County Board of Supervisors. A majority of the taxpayers in the relevant area may petition the County Board and ask that a no-fence district be formed. Upon submitting such a petition, the Board will immediately record it and order the formation of the district.

### **Where are the no-fence districts in Arizona?**

Only a handful of counties currently have no-fence districts. Below are maps and legal descriptions obtained by the Arizona Farm Bureau. For more information, click on the County's name at the top of the page.

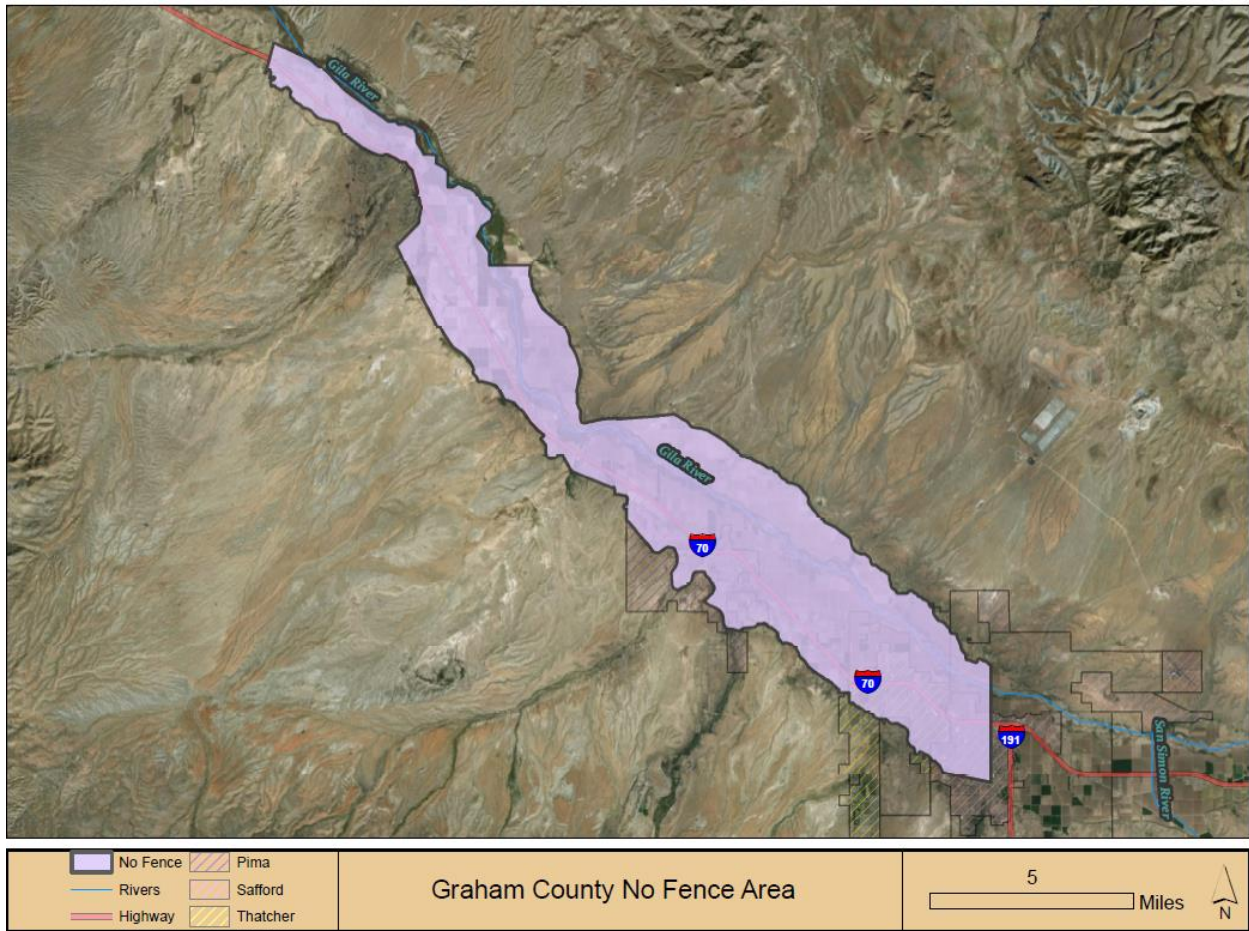
If your county is not listed, please contact your county's Planning and Zoning department for more information.

Cochise County



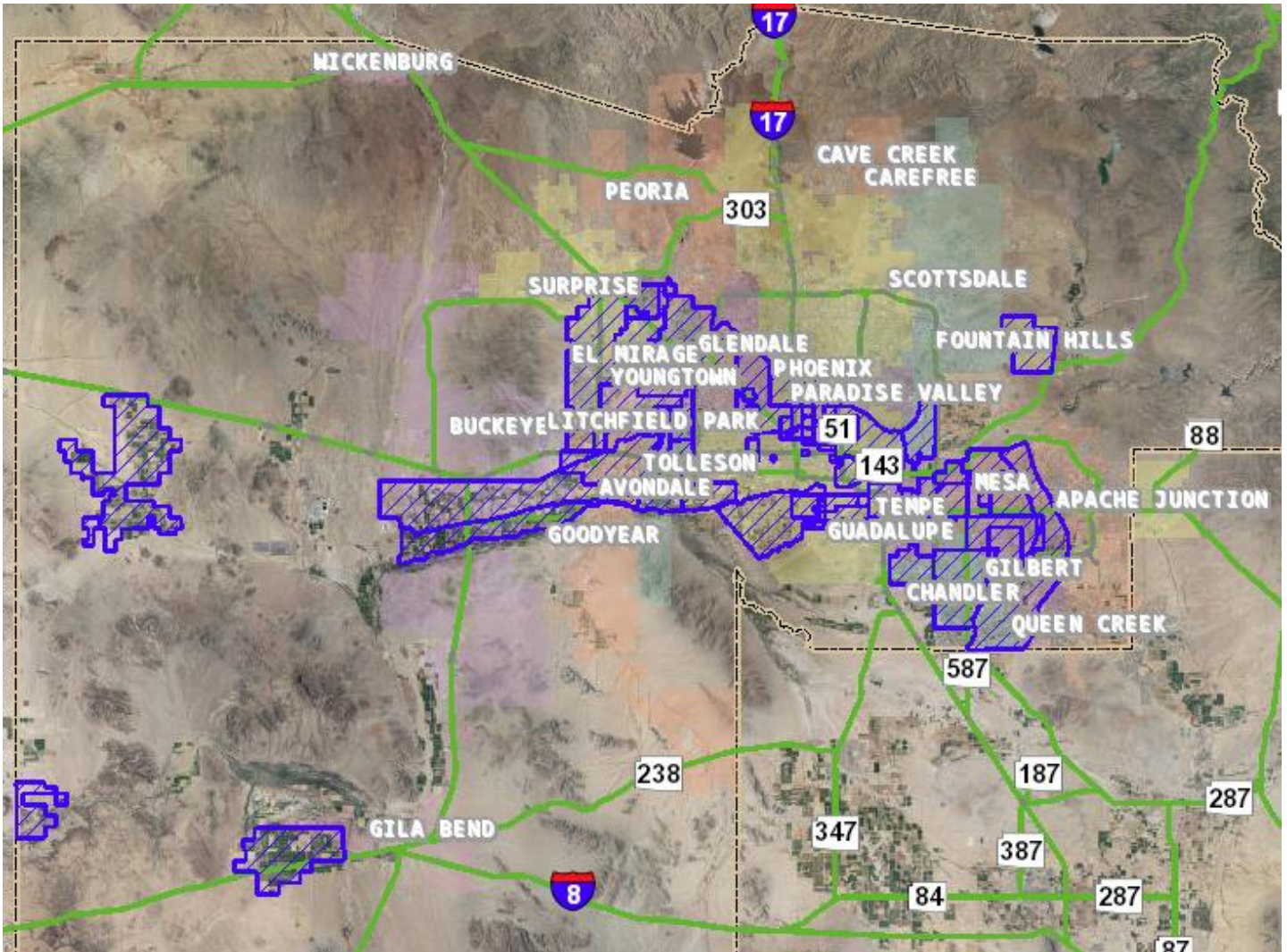
Contact the Arizona Farm Bureau Government Relations team for more information.  
Chelsea McGuire ([chelseamcguire@azfb.org](mailto:chelseamcguire@azfb.org)) | Ana Otto ([anakennedy@azfb.org](mailto:anakennedy@azfb.org))  
Tyler Davis ([tylerdavis@azfb.org](mailto:tylerdavis@azfb.org))

Graham County



Contact the Arizona Farm Bureau Government Relations team for more information.  
Chelsea McGuire ([chelseamcguire@azfb.org](mailto:chelseamcguire@azfb.org)) | Ana Otto ([anakennedy@azfb.org](mailto:anakennedy@azfb.org))  
Tyler Davis ([tylerdavis@azfb.org](mailto:tylerdavis@azfb.org))

Maricopa County



Contact the Arizona Farm Bureau Government Relations team for more information.  
Chelsea McGuire ([chelseamcguire@azfb.org](mailto:chelseamcguire@azfb.org)) | Ana Otto ([anakennedy@azfb.org](mailto:anakennedy@azfb.org))  
Tyler Davis ([tylerdavis@azfb.org](mailto:tylerdavis@azfb.org))

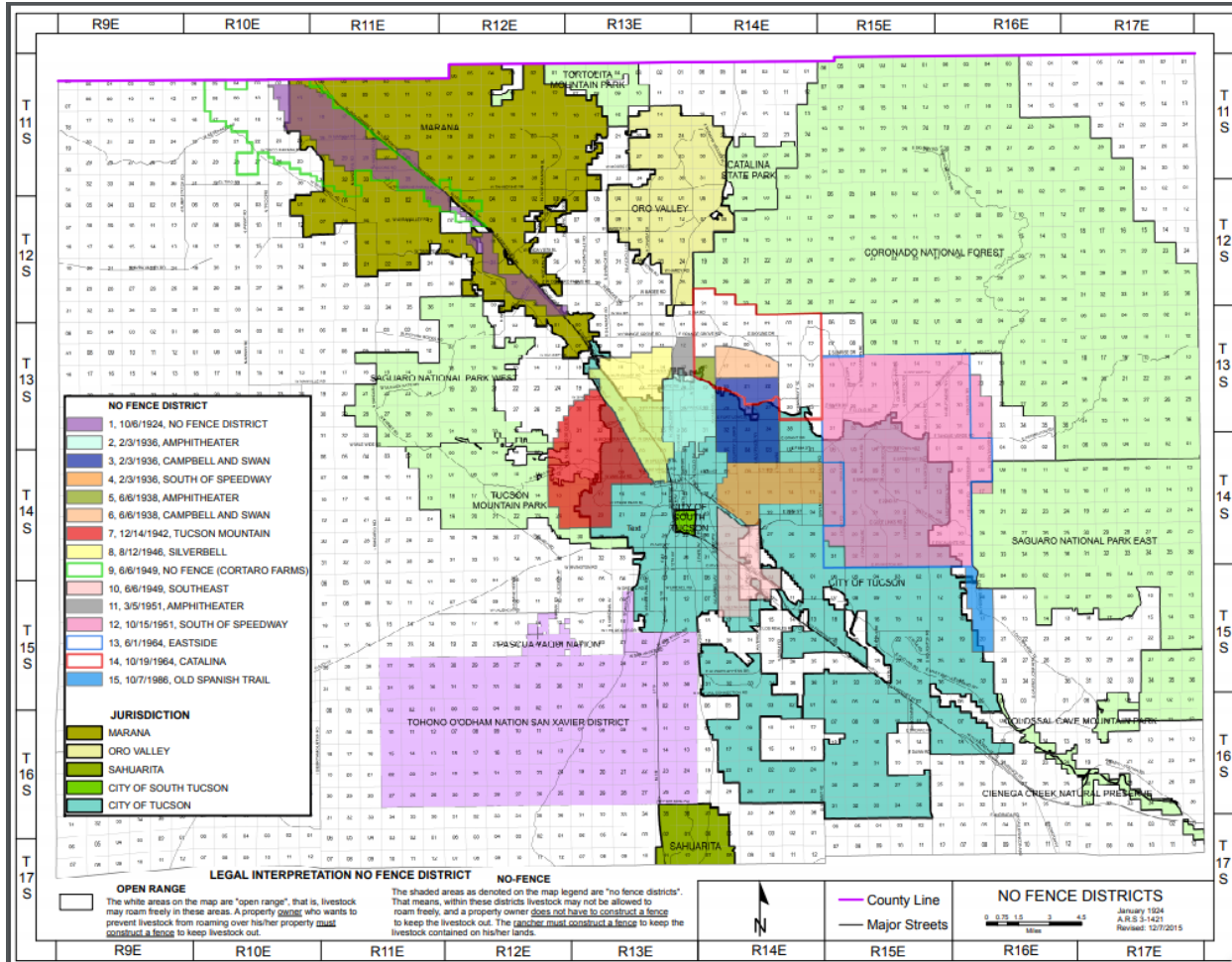


## Mohave County

A legal description of the no-fence district for Mohave County can be found here: <https://www.azfb.org/Public-Policy/Resources-and-Links>

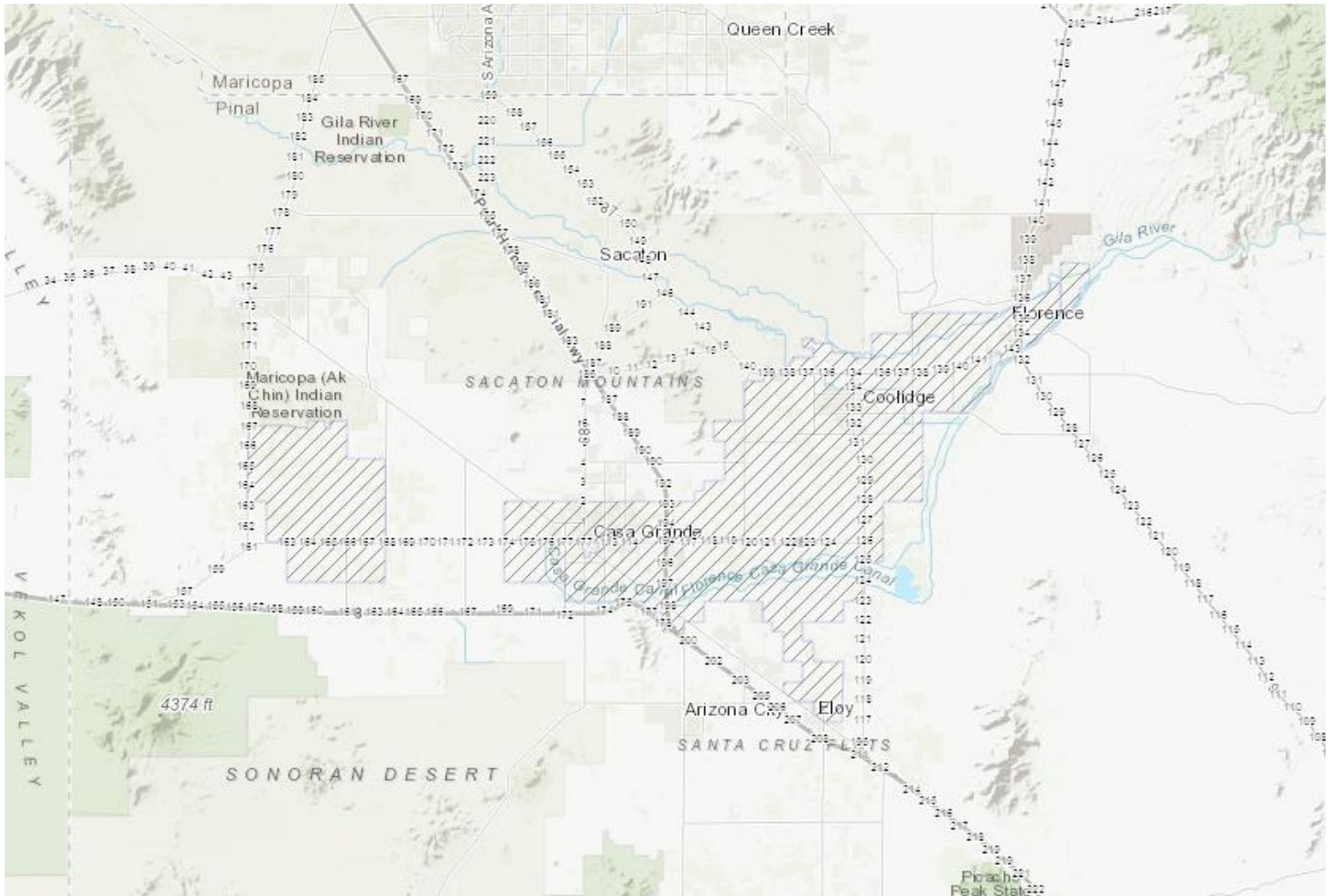
Contact the Arizona Farm Bureau Government Relations team for more information.  
Chelsea McGuire ([chelseamcguire@azfb.org](mailto:chelseamcguire@azfb.org)) | Ana Otto ([anakennedy@azfb.org](mailto:anakennedy@azfb.org))  
Tyler Davis ([tylerdavis@azfb.org](mailto:tylerdavis@azfb.org))

Pima County



Contact the Arizona Farm Bureau Government Relations team for more information.  
 Chelsea McGuire ([chelseamcguire@azfb.org](mailto:chelseamcguire@azfb.org)) | Ana Otto ([anakennedy@azfb.org](mailto:anakennedy@azfb.org))  
 Tyler Davis ([tylerdavis@azfb.org](mailto:tylerdavis@azfb.org))

Pinal County



Contact the Arizona Farm Bureau Government Relations team for more information.  
Chelsea McGuire ([chelseamcguire@azfb.org](mailto:chelseamcguire@azfb.org)) | Ana Otto ([anakennedy@azfb.org](mailto:anakennedy@azfb.org))  
Tyler Davis ([tylerdavis@azfb.org](mailto:tylerdavis@azfb.org))



**Counties that do not have no-fence districts include:**

- Yavapai
- Coconino
- Navajo

Contact the Arizona Farm Bureau Government Relations team for more information.  
Chelsea McGuire ([chelseamcguire@azfb.org](mailto:chelseamcguire@azfb.org)) | Ana Otto ([anakennedy@azfb.org](mailto:anakennedy@azfb.org))  
Tyler Davis ([tylerdavis@azfb.org](mailto:tylerdavis@azfb.org))